



# Solo Lighting Controllers



LIGHTING CONTROL



# A PRECISE AND EASY MANAGEMENT OF YOUR POULTRY HOUSE LIGHTING MAKES YOUR FARM GROW SMARTER.

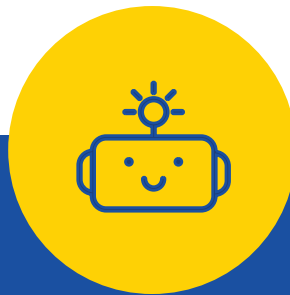
The Solo Climate has a lot of assets:

- Alarm relay.
  - Relay output.
  - TRIAC variable output.
  - Analog output.
  - 5-year frame warranty.
  - Robust steel frame construction.
  - Can define up to 20 different periods during a single production cycle and for each period, up to 12 dusk-to-dawn sequences and 20 light peaks.
  - Can be set up by 2 people.
- SPDT (1 Form C)  
3 A at 24 VDC (resistive)  
3 A at 240 VAC (resistive)
  - SPST (1 Form A)  
10A @ 24VDC (resistive)  
10A @ 240 VAC (resistive)  
1HP @ 120 VAC (inductive)  
5 HP @ 240 VAC (inductive)
  - For LCL & LEL models 10 A (resistive)  
2400 W @ 240 VAC  
1200 W @ 120 VAC
  - For LC & LE models 15 A (resistive)  
2400 W @ 240 VAC  
1200 W @ 120 VAC
  - 0-10 VDC, sink, maximum load: 1mA.



## PRECISE

Solo Lighting offers precise, adjustable light duration and intensity from 0 to 100%.



## PROGRAMMABLE

Solo lets you program lighting by growth, stimuli cycles, and two light groups.



## USER-FRIENDLY

Solo's interface is intuitive, letting you navigate its user-friendly menus effortlessly.

"No other controller handles my poultry house LEDs like the Solo. It completely stops flickering, dims super low, and helps me save energy. Plus, it works with all kinds of lamps, so I can pick whatever I want. I couldn't ask for more."

Mark S. Thompson - Broiler producer



## OUR POULTRY SHINING STAR

# SOLO LIGHTING

- Simulates sunrise and sunset by gradually increasing and decreasing light intensity.
- Alarm contact (NO/NC) in case of power failure or fault in operation.
- Specified as a percentage range of full lamp intensity.
- Backup battery maintains real-time clock during power loss.
- Display of current time, day, light intensity and period.
- Electronic bypass switches.
- Minimum-inertia technique for smoothing light intensity shifts.
- Connects to two low-power dimmers for remote lighting control.
- Lamp output activated above or below a threshold value.



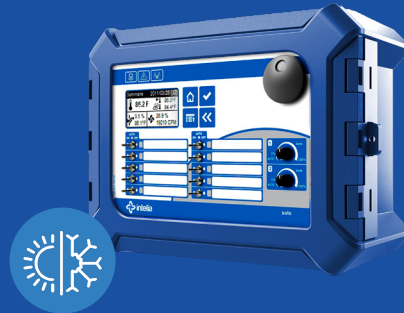
### SOLO LIGHTING

<b>Nb. of dimmable channels</b>	2
<b>Lighting cycles per day</b>	Up to 20
<b>Independent light groups</b>	2
<b>Supports sunrise/sunset simulation</b>	✓
<b>Minimum light level control</b>	Ultra-stable (even on generator)
<b>Backup battery for timekeeping</b>	✓
<b>Remote dimmer compatibility</b>	✓ (2 low-power dimmers)
<b>Alarm relay</b>	✓
<b>Manual bypass switches</b>	✓
<b>USB configuration backup</b>	✓
<b>Works as master or expansion</b>	✓

# THE COMPLETE LINE OF INTELIA CONTROLS



**SOLO**  
PROGRAMMABLE  
LIGHTING CONTROL



**SOLO**  
CLIMATE CONTROL



**UNITY**  
CLIMATE CONTROL



**NANO+**  
CONTROL

Intelio has a controller for every livestock operation. The line goes from the unique Solo light dimmer to multitasking Unity and sophisticated Internet-connected Nano. Intelio's controllers give you total control of your production environment.



info@intelio.com  
intelio.com