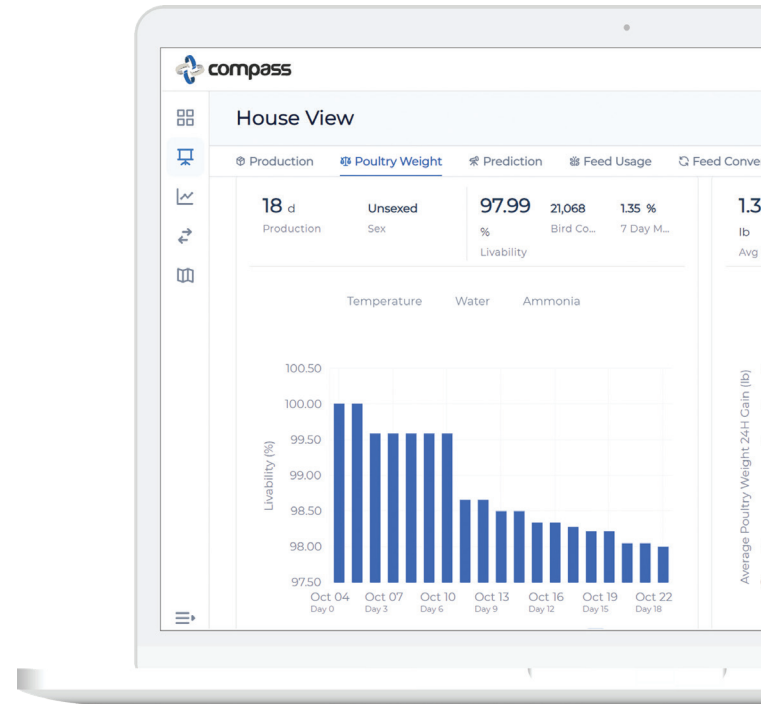


Revolutionizing Farm Management Efficiency

Inteliala's Compass is a cutting-edge farm management system designed to revolutionize precision agriculture. Harnessing the power of artificial intelligence and data analytics, Compass empowers farmers to optimize their operations and maximize productivity by providing real-time insights and actionable recommendations. Inteliala's Compass enables farmers to make informed decisions, streamline workflows, and improve overall efficiency. With Compass, farmers can navigate the complexities of modern agriculture with confidence and drive sustainable growth for their farms.



COMPASS Farm Data Management system



CENTRALIZED

All data, from all the farms, is aggregated in a single platform, accessible to all users on any internet connected device, either through the web portal or a mobile app.



PREDICTIVE

Backed by artificial intelligence, COMPASS predicts performance on key metrics and detect deviations earlier than with traditional supervision models.



REAL-TIME

Reporting in real-time, tools allow users to quickly identify flocks that are not performing optimally and take actions based on up-to-date information.



CONTINUOUS

Monitor production as it happens. Access all the information remotely to ensure growers and farm staff are aligned on priorities.



RELIABLE

Reduce the unpredictability of live operations by accessing reliable data, free from any manual entry error, and base decisions on valid information.



BEST PRACTICES

Monitor the application of best practices across the whole organization. Optimize for efficiency to improve outcome and profitability.



intelialia

COMPASS FARM DATA MANAGEMENT

Compass enables the consistency required to get the expected ROI

Bird Weight & Growth Management

Feed Management

Flock Management

Climate Data (temperature, humidity, CO2, ammonia, static pressure)

Water Consumption Data



Compass Features

- Web-based portal and mobile app.
- The **Global-View** page aggregates the most up-to-date information from all the connected houses on a single page. Practical filters allow users to focus quickly on subject-specific data.
- The **House View** page provides a summary of the current production, with clear graphs and predictive tools.
- The **Historical tool** allows you to drill down into current or past flocks for a more thorough analysis. Data points can be superimposed for correlation and exported as an Excel file.
- The **Comparison tool** is where you can benchmark two flocks against one another, even if they are from different farms or different times.
- **Alerts & Notifications** focus on monitoring deviations from expected bird performance, ideal rearing conditions, early disease detection and catastrophic events.