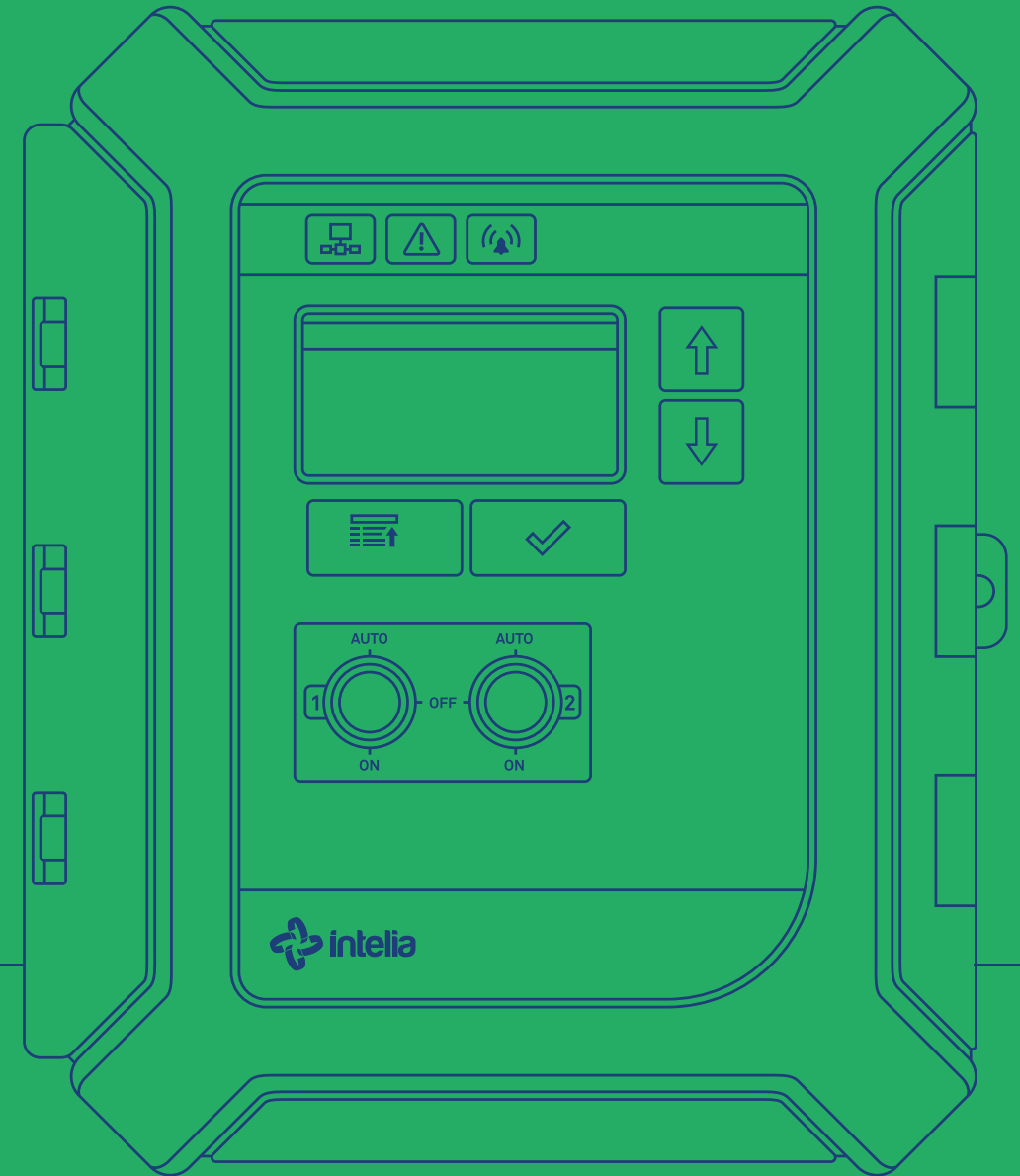


SOLO



TECHNICAL GUIDE



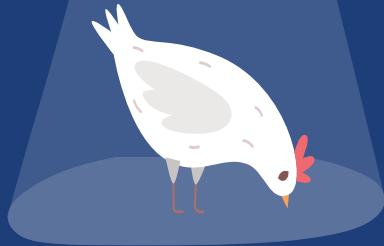
+1 514 394-7170
1000 Raoul-Charette
Joliette (Québec) Canada
J6E 8S6

info@intelia.com
intelia.com



SOLO'S AMAZING FEATURES:

- Gradual increase and decrease in light intensity to simulate sunrise and sunset.
- Alarm contact (NO/NC) in case of power failure or fault in operation.
- Minimum and maximum intensities specified as a percentage of full lamp intensity.
- Real-time clock with backup battery to keep time in case of power failure.
- Display of current time, day, light intensity and period.
- Electronic bypass switches.
- Minimum-inertia method used to smooth sudden transitions in light intensity.
- Can be connected to two lighting remote-control units (low power dimmers).
- Lamp output activated above or below a threshold value.



POWER SUPPLY		MAIN SUPPLY/ FREQUENCY	
Main line voltage & frequency	85-250V, 50/60 Hz		
Main fuse	1A-250VAC, fast acting (5X20 mm)		
INPUTS			
Analog inputs	4-20mA or 0-5VDC		
Digital outputs	Pulse width > 10 ms		
OUTPUTS			
Alarm Relay	SPDT (1 form C) 3A @ 24 VDC (resistive)	3A @ 240 VAC (resistive)	
Relay Output	SPST (1 Form A) 10A @ 24VDC (resistive) 10A @ 240 VAC (resistive)	1HP @ 120 VAC (inductive) 5 HP @ 240 VAC (inductive)	
TRIAC Variable Output	For LCL and LEL models 10 A (resistive) 2400 W @ 240 VAC 1200 W @ 120 VAC	For LC and LE models 15 A (resistive) 3600 W @ 240 VAC 1800 W @ 12 VAC	

GET FULL POULTRY HOUSE MANAGEMENT TOOLS

	SOLO CLIMATE	UNITY
Ventilation	up to 8 outputs	up to 24 outputs
Crossed	✓	✓
Natural	✓	✓
Tunnel		✓
Curtain control	✓	✓
Air inlet management	✓	✓
Cooling		✓
De-icing mode		✓
Day and night modes		✓
Heating	up to 4 zones	up to 8 zones
Lighting		up to 6 outputs
Timers	✓	✓
Feeders		✓
Feed auger meter		✓
Water monitoring		✓
Fogging		✓
Alarms	up to 1	up to 3
Bin scale management		✓

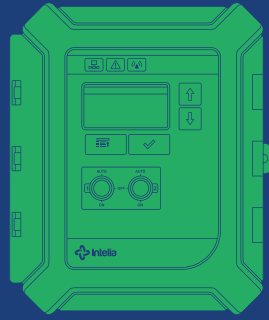
INPUTS	SOLO CLIMATE	UNITY
Inside temperature monitoring	✓	up to 12 probes
Outside temperature monitoring		1 probe each
Humidity		
Static pressure		
CO ₂		
CO		
Ammonia		

COMMUNICATION CAPABILITIES	SOLO CLIMATE	UNITY
USB port		✓
Emailed report		
SMS		
Remote access		✓
Remote control		

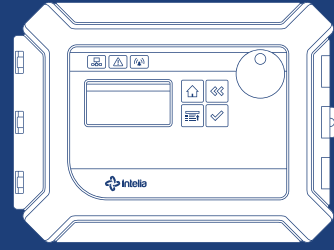
SOLO LIGHTING CONTROL FINAL TOUCHES:

- It allows you to define up to 20 different periods during a single production cycle and for each period, up to 12 dusk-to-dawn sequences and 20 light peaks.
- Energy Efficiency of 99.5%.
- Flickering free lighting.
- Low low low light dimming.
- Superior stability.
- Compatible with a wide range of LED lamps.

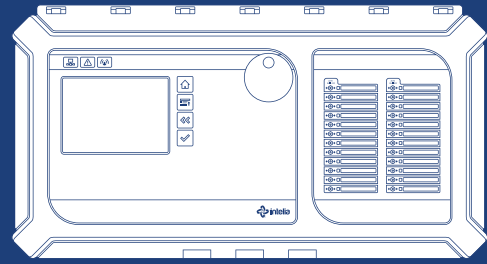
THE COMPLETE LINE OF INTELIA CONTROLS



SOLO
PROGRAMMABLE
LIGHTING CONTROL



SOLO
CLIMATE CONTROL



UNITY
CLIMATE CONTROL

Intelia has a controller for every livestock operation. The line goes from the unique Solo light dimmer to multitasking Unity and sophisticated Internet-connected Nano. Intelia's controllers give you total control of your production environment.



+1 514 394-7170
1000 Raoul-Charette
Joliette (Québec) Canada
J6E 8S6

info@intelia.com
intelia.com



SOLO – PROGRAMMABLE LIGHTING CONTROL

SOLO – PROGRAMMABLE LIGHTING CONTROL

Litho Canada 2017 Technologies Intelia inc.



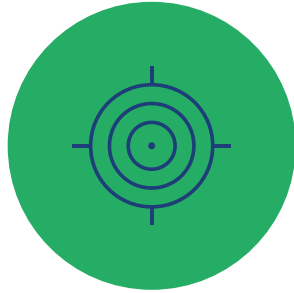
STARS SHOULD BE WELL LIT.

+ SMART CONTROLS

SOLO WILL HELP THEM STEAL THE SHOW.

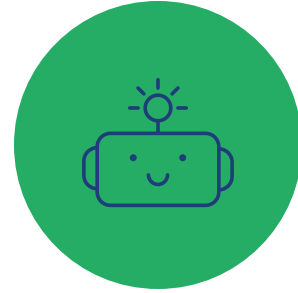


A PRECISE AND EASY MANAGEMENT OF YOUR POULTRY HOUSE LIGHTING MAKES YOUR FARM GROW SMARTER.



PRECISE

The Solo lighting control is as precise as a Swiss clock, nothing less. It's designed to let you control and adjust the light duration and intensity, from 0 to 100%, over your bird's life cycle.



PROGRAMMABLE

The Solo allows you to program your lighting according to your animals growth curve, to set up stimuli cycles and to manage two independent groups of lights.



USER FRIENDLY

Solo's interface is as easy to use as 1,2,3. You will navigate with ease within the Solo's user friendly menus.

"NO OTHER DIMMER CONTROLS MY POULTRY HOUSE LEDs BETTER THAN THE SOLO DOES.

IT TOTALLY ELIMINATES FLICKERING, IT DIMS EXTRA LOW AND IT MAKES ME SAVE ENERGY. BECAUSE IT WORKS WITH A WIDE VARIETY OF LAMPS, I CAN CHOOSE WHICHEVER MODEL I PREFER. I CAN'T ASK FOR MORE."

- A CHICKEN FARMER

